

Global Gateway

**Team Europe's Strategy for Investments,
Values and Sustainable Development**





Global Gateway reflects hard truths about today's world

- **The competition of offers is fierce. Europe needs the best one.**
- **Global development needs cannot be covered by the public budgets alone.**
- **Our rivals are becoming more aggressive and allies more assertive.**
- **Global Payer must become Global Player.**



Unleashing the power of Team Europe

- **EU institutions**
- **Member States**
- **Development Financial Institutions**

And strong expertise of European Private Sector

Global Gateway and the Private Sector

Business Advisory Group: Strategic input from private sector

- 59 private sector representatives (CEO level) + 10 observers (DFIs, ECAs, EIB and EBRD)
- Last plenary meeting took place on 23 September 2025
- GG BAG representatives met President von der Leyen, 8 October 2025

Outreach to private sector – through existing platforms:

- [EU Business Fora – European Commission](#)
- [Global Gateway Business Opportunities - International Partnerships](#)
- High-level private sector events, dialogues and seminars organised at capital level, by the EU MS



Digital

The EU will support open and secure internet

Climate and energy

The EU will support investments and rules paving the way to the clean energy transition

Transport

The EU will support all modes of green, smart and safe transport

Education and research

The EU will invest in high quality education, with a focus on girls and women and vulnerable groups

Health

The EU will help strengthen supply chains and local vaccines production



Note that there are many sub-sectors included under the main Global Gateway Sectors, such as **agriculture**, **nutrition**, and **water**. Click [here](#) for more info.



Democratic values and high standards



Good governance and transparency



Equal partnerships



Green and clean



Security focused



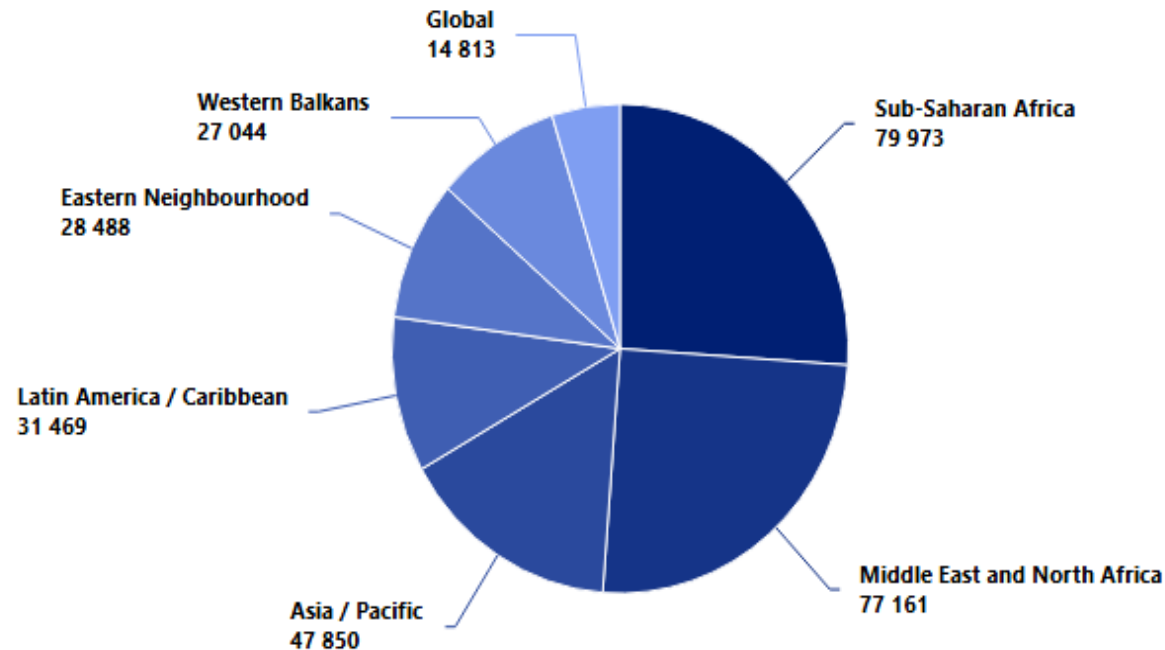
Catalysing private sector investment

Over EUR 300 billion already mobilised in investments

Total Global Gateway investments mobilised 2021 – 2024

306 798 million €

Numbers in million € - Source: European Commission

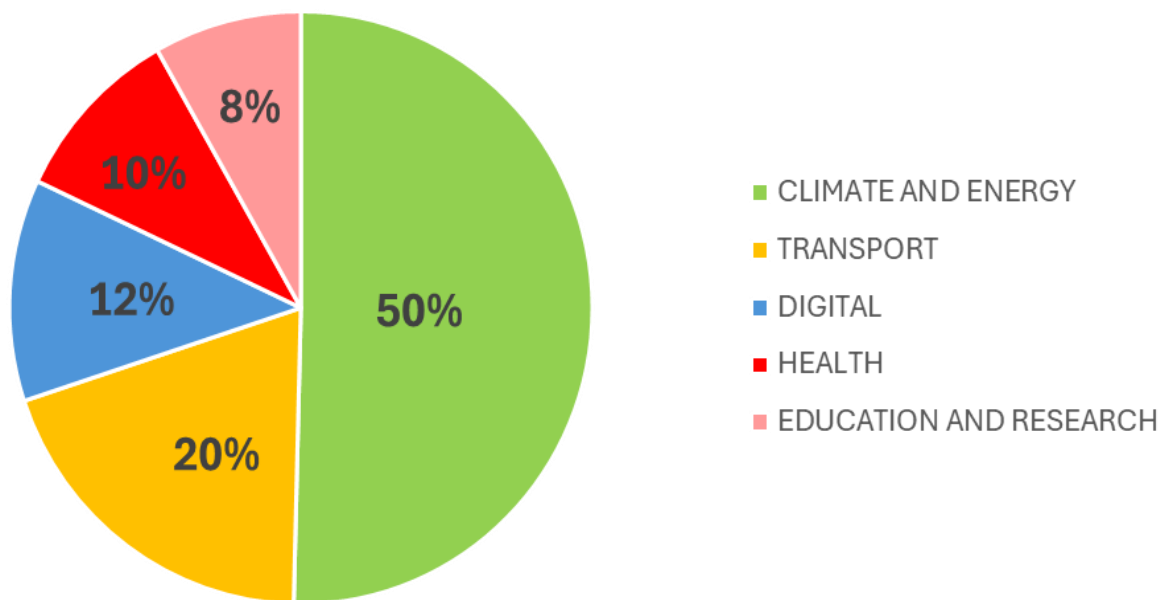


Global Gateway is implemented through a "Team Europe" approach. Team Europe consists of the European Union, EU Member States — including their implementing agencies and public development banks — as well as the European Investment Bank (EIB) and the European Bank for Reconstruction and Development (EBRD).

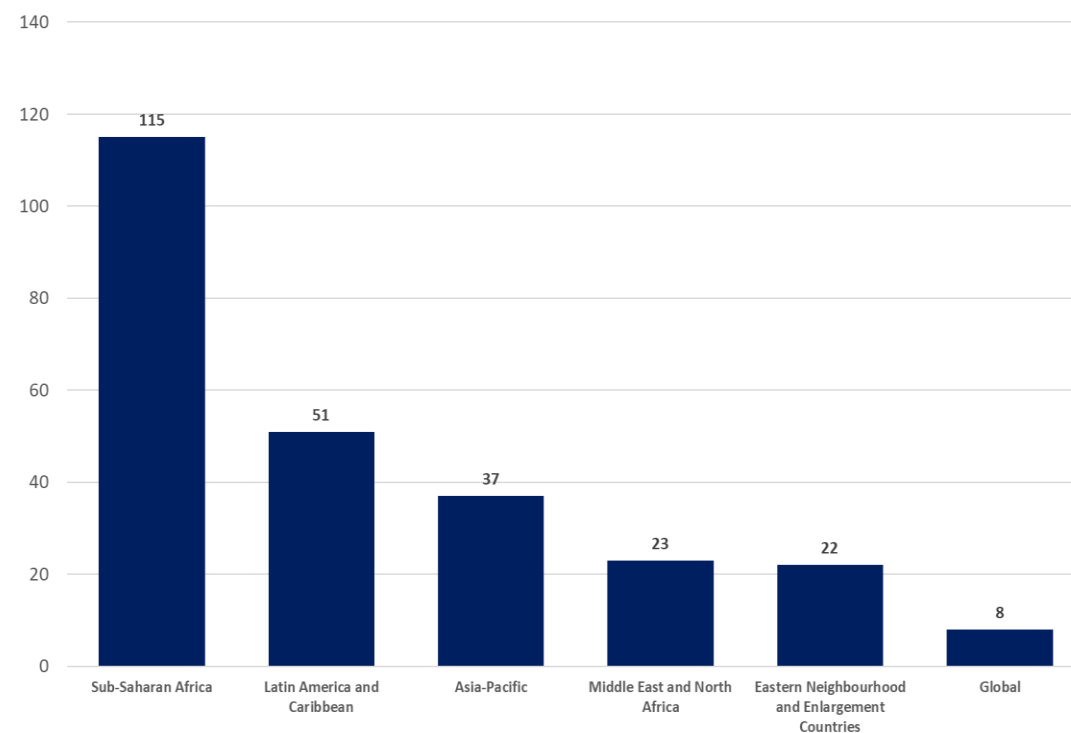


256 flagship projects:

Per sector:



Per region:



More than just infrastructure: 360 degree



Infrastructure tailored to context through strategic, bankable projects aligned with partner priorities and plans



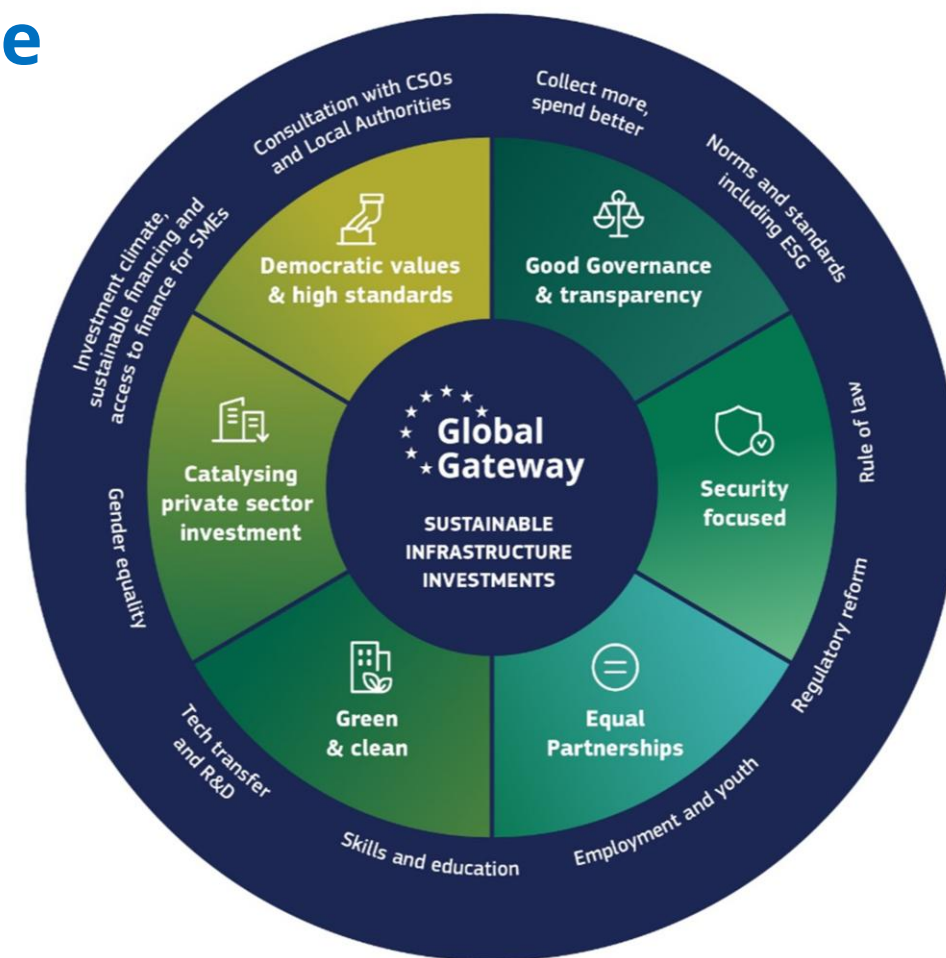
High standards and inclusive transformation through ESG, climate neutrality, digitalisation, rights, rule of law, inclusion



Enabling investment climate and private capital through macro stability, regulatory reform, de-risking to crowd in investors



Full EU toolbox and Team Europe delivery
EFSD+ guarantees, blending, grants, budget support, policy dialogue



The example of Green Hydrogen in Namibia

- **Objective:** build green hydrogen and CRM value chains to promote local value addition
- **Infrastructure:** 85 MW solar + RH₂ storage; corridors to Walvis Bay
- **Team Europe:** EU, DE, FR, BE, NL, FI, EIB, private sector, ports
- **Scale and impact:** EUR 1.3 bn to mobilise >€20 bn in investments; 1.8 Mt CO₂/year avoided; 6,900 jobs; 60+ SMEs
- **Flagships 2025:** HyIron zero-emissions iron; Cleanergy green H₂/ammonia
- **360/Enablers:** regulatory reform, TVET skills, standards; bankable off-takes



Initiative on Manufacturing and Access to Vaccines, Medicines and Health Technologies - MAV+

Strengthening Africa's vaccine & health-tech manufacturing



- **Objective & scope:** Build local pharma systems and manufacturing capacity across Africa. Focus on whole value chain, high standards, R&D, regulation, skills/TVET, digitalised supply chains, ESG and quality.
- **Team Europe + Africa + global partners + local and EU private sector**
EU/DE/FR/BE, EMA/regulators, EDCTP, EIB/bilateral banks; AU/AMA/Africa CDC/AUDA-NEPAD; WHO; BMGF; Univercells (Senegal/South Africa); BioNTech (Rwanda) and others.
- **EUR 1.99 billion mobilised investments** including through 95+ projects and a EUR 590 m contribution to GAVI
- **Country actions (highlights)**
Senegal (MADIBA, ARP), Ghana (fill-finish, FDA), Nigeria (skills, digital supply), South Africa (research, NRA TA, scaling), Rwanda (FDA, skills, mRNA), Egypt (R&D, regulatory planning).
- **Scale up 2025:**
 - **Rwanda** mRNA hub (BioNTech) — EL EUR 35m EC grant + up to EUR 60m EIB credit via HDX.
 - **MedAccess volume guarantees** — EUR 52m Underwrite offtake to ensure availability/affordability of key health products.
- **Additional country envelopes**
 - **South Africa** EUR 15.8m (biomanufacturing & safety CoE);
 - **Ghana** EUR 1.9m (labs/R&D/compliance);
 - **Nigeria** EUR 15.5m (local manufacturing/standards);
 - **Senegal** EUR 10m (ecosystem for vaccines/medicines).
- **HDX de-risking at scale**
 - **€750m guarantee facility** to catalyse vaccine/pharma investments.

Škoda Group electric trains to Uzbekistan

„Zakázka dvacetiletí“

- Up to 10 trains to Uzbekistan national railways
- Global Gateway guarantee provided to EIB -> EGAP -> Uzbekistan
- Joint venture for localisation, servicing and the establishment of Škoda Academy
- Basis for broader cooperation between the EIB – EGAP, and potentially other European export credit agencies
- The EIB and DG INTPA currently exploring possibility to provide 500 million EUR in Global Gateway guarantees to support additional export cases.

Global Gateway Investment Hub

Big step for our cooperation with private sector



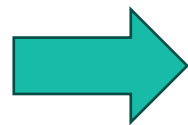
Why an Investment Hub?

Context

- Fragmented instruments & multiple entry points
- Demand from EU companies and partner countries for a one-stop shop for EU private sector
- Accelerate project preparation and visibility of Team Europe pipeline

Objectives

- Provide a **new entry point** for Global Gateway investments for EU companies
- Act as a facilitator, **not a new instrument**
- Strengthen early and structured cooperation with DFIs, ECAs, private sector and Member States to jointly shape Team Europe investment packages and mobilise EU funding.



Level playing field for all MS

Opening opportunities for cross-country partnerships



EU companies must first contact their **Team National** to submit proposals to the EU.

Team National:

Your main entry point to the IH



EU companies can only submit proposals to the EU through their **Team National**. Click [here](#) for more info.

Team National has the following **responsibilities**:

- **Unites key national stakeholders:** government bodies, DFI, ECA*, business associations, private sector
- **Selects, endorses, and commits to support projects**
- **Channels projects** to INTPA for coordinated support to address remaining investment barriers

Investment Hub – 3-step journey

1

SUBMISSION



Companies cannot submit to the EU directly

- **EU Company** sends project proposal to a Team National.
- **Team National** selects, supports, and submits to Investment Hub.



Rolling
basis



2

ASSESSMENT

- **DG INTPA** assesses based on eligibility and assessment criteria and informs Team National of outcome.

1 month

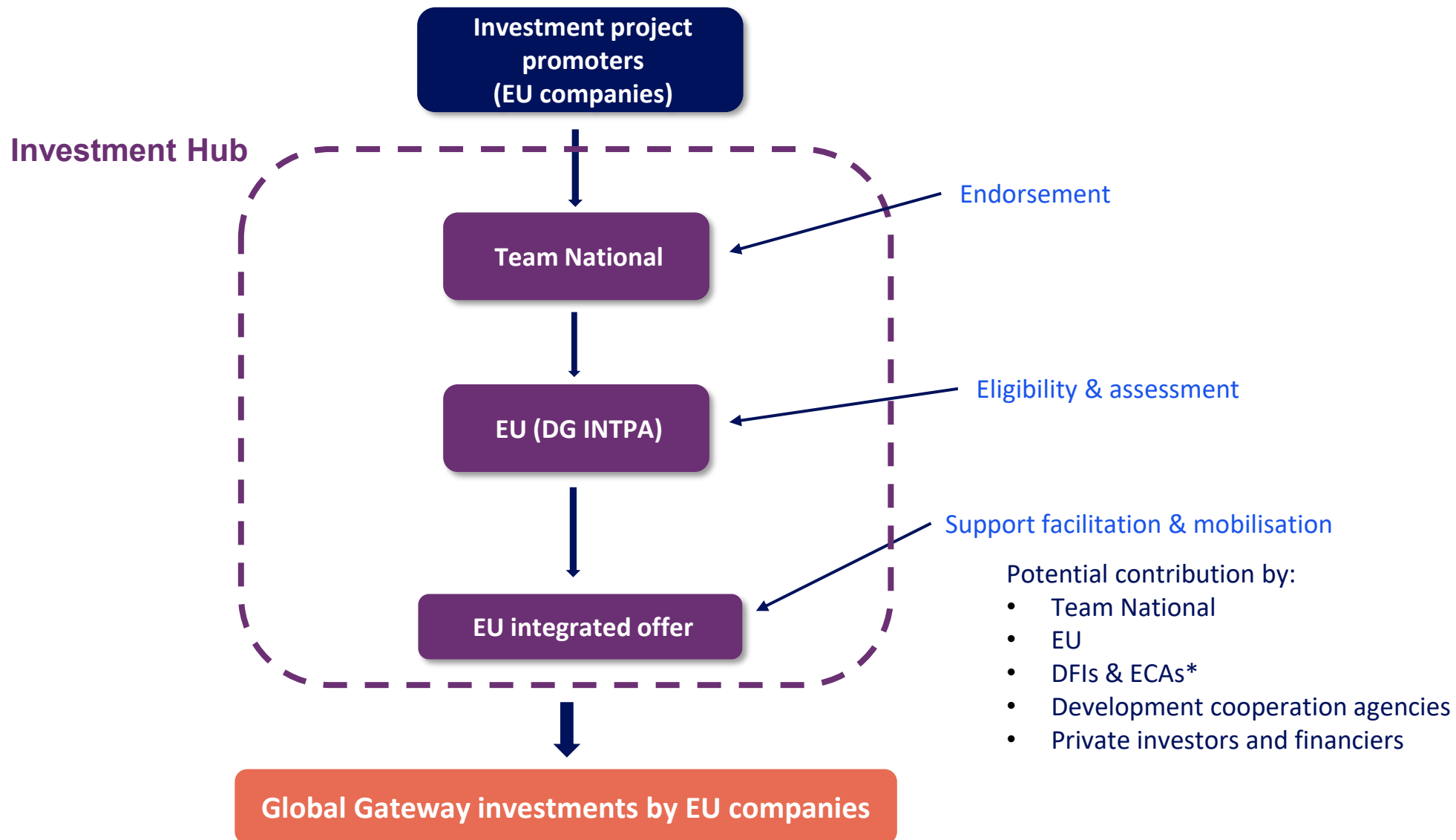


3

SUPPORT IDENTIFICATION & MOBILISATION

- **DG INTPA and Team National** facilitate access to tailored support from **financing institutions** and other **Team Nationals** based on barriers identified by **EU company**.

The Investment Hub process



Eligibility criteria



Who Can Apply...

- **Company headquartered in the EU**
- **Minimum 10% own contribution** of project investment size



Project Requirements:

- **Priority sectors:** Climate & Energy, Digital, Health, Education & Research, Transport
- **Eligible country/region***
- **Strategic alignment** with Global Gateway values and objectives.
- **Team National Commitment**
- **Minimum size: EUR 10m** (except for flagship projects)
- **Partner country** buy-in and aligned interest.

* Latin America and Caribbean, Sub-Saharan Africa, Asia Pacific

Type of Support available



Financial Support

- **Grants:** e.g. for studies or project preparation
- **Loans, equity, or guarantees** provided by public or private financial institutions
- **De-risking solutions:** including guarantees, political risk coverage or local currency solutions



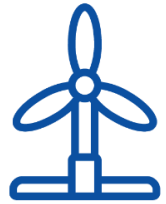
The Investment Hub does not replace the decision-making processes of financial institutions.



Non-Financial Support:

- **Political Support and economic diplomacy:** Diplomatic backing via EU networks and bilateral relationships
- **Dialogue with local authorities:** regulatory issues, investment enabling conditions, market access
- **Technical Assistance:** feasibility studies, ESG assessments, project structuring
- **Upfront coordination** to promote the EU offer in international competitive processes
- **Identification of European partners** to build competitive consortia

Fictitious example – Windmill project



Constructing a windmill farm (€ 200 million) in country X

Initial contribution

Company contribution

- Equity €40 million
- Feasibility study
- Local community support
(*signed agreement*)
- Local partner



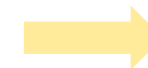
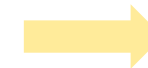
Team National contribution

- DFI: €80 million loan
- Dev. Coop. Agency: funding of Environmental and Social Impact Assessment
- MFA: support of embassy in country X

Fictitious example – Windmill project

Needs / Missing support

- Loan €80 million
- Local workforce training
- EU support to receive government support
- Modernisation of energy law



Support mobilised through Investment hub

- EIB: Loan €40 million backed with EC guarantee
- DFI: Loan €20 million backed with EC guarantee
- "[Climate Investor One](#)": Loan €20 million
- Identify training needs through "[TEI OP-VET](#)" and training of 300 people through "[DeveloPPP](#)"
- EU Delegation joins company/EU member state engagement with local government
- Support of "[ICR Facility](#)" to update energy law

Useful links

- [Course: Global Gateway Toolkit | EU International Partnerships Academy](#)
- [Investment Hub - International Partnerships - European Commission](#)
- [Global Gateway Business Opportunities - European Commission](#)
- [Global Gateway - International Partnerships - European Commission](#)
- [Contact list of Teams National](#)
- [GG Brochure](#)
- [Global Green Bond Initiative](#)
- [Global Gateway Projects](#)
- [MZV ČR – Team Czechia](#)