



**PROVEN
SOLUTIONS
FOR YOU!**

Kharkov Bearing Plant

CYLINDRICAL ROLLER BEARINGS FOR ROLLING STOCK



Kharkov Bearing Plant HARP is one of the biggest manufacturers of the bearing products in the CIS.



Year of foundation – 1947

Area – 45,56 ha

Number of employees — over 2 000

OVERVIEW



■ SPECIALIZATION:

ball and roller bearings
semi-finished bearing parts

■ PRODUCT RANGE:

More than 500 types of bearings
with outer diameter from 30 to
400 mm

■ **TRADEMARKS:** HARP,
HARP AGRO, HARP AUTO,
HARP AGRO UNIT, X-SHIELD

■ **APPLICATION:** agricultural,
automotive, metallurgical, railway
industries.



[MORE](#)

QUALITY SYSTEM



ISO 9001
ISO/TS 16949
ISO 14001

ISO 492
GOST 520
DSTU 8734:2017

EN 12080:2017
EN 12082:2017
(TSI)

CERTIFICATE

This is to certify that

**PRIVATE JOINT-STOCK COMPANY
«KHARKIV BEARING PLANT»
(PJSC «HARP»)**

3, Industriálna Ave,
Kharkiv, 61089
Ukraine

has implemented and maintains a **Quality Management System**.

Scope:
Design and manufacturing of ball and rolling bearings and its parts

Through an audit, documented in a report, it was verified that the management system fulfills the requirements of the following standard:

ISO 9001 : 2015

Certificate registration no.: 31100463 DM15
Valid from: 2019-10-29
Valid until: 2021-10-28
Date of certification: 2019-10-29

DOK GmbH
Stefan Hecht
Managing Director

Approved Body: DOK GmbH, August-Straße 21, 90461 Frankfurt am Main, Germany
Autorizovaný orgán: DOK GmbH, Augustova 21, 90461 Frankfurt, Nemecko
Accredited Body: DOK GmbH, Augustova 21, 90461 Frankfurt, Nemecko

CERTIFICATE

This is to certify that

**PRIVATE JOINT-STOCK COMPANY
«KHARKIV BEARING PLANT»
(PJSC «HARP»)**

3, Industriálna Ave,
Kharkiv, 61089
Ukraine

has implemented and maintains an **Environmental Management System**.

Scope:
Design and manufacturing of ball and rolling bearings and its parts

Through an audit, documented in a report, it was verified that the management system fulfills the requirements of the following standard:

ISO 14001 : 2015

Certificate registration no.: 31100463 DM15
Valid from: 2019-05-14
Valid until: 2021-05-13
Date of certification: 2019-05-14

DOK GmbH
Stefan Hecht
Managing Director

Approved Body: DOK GmbH, August-Straße 21, 90461 Frankfurt am Main, Germany
Autorizovaný orgán: DOK GmbH, Augustova 21, 90461 Frankfurt, Nemecko
Accredited Body: DOK GmbH, Augustova 21, 90461 Frankfurt, Nemecko

Výskumný ústav dopravný, a. s.
Veľký Diel 3323, 010 08 ŽILINA

Autorizovaný orgán: DKT-CZ s.r.o. | Autorizovaný orgán: DKT-CZ s.r.o. | Autorizovaný orgán: DKT-CZ s.r.o.
Autorizovaný orgán: DKT-CZ s.r.o. | Autorizovaný orgán: DKT-CZ s.r.o. | Autorizovaný orgán: DKT-CZ s.r.o.

Intermediate Statement of Verification - EC Type Examination

No. 1356/8.1/8B/2019/RST/EN444/01

In accordance with Directive 2006/78/EC of the European Parliament and of the Council of 17 June 2006 on the interoperability of the rail system within the Community as amended

Part of subsystem

- Roller radial bearings with short cylindrical rollers 304272EM (WJ130x240)
- Roller radial bearings with short cylindrical rollers 323272EM (WJ1130x240)

Private Joint Stock Company U.P.E.C. (PJSC U.P.E.C.)
4, Marshal Bat'kivsky Str., Kharkov, 61038 Ukraine
and produced in the manufacturing plant
Private Joint Stock Company Kharkov Bearing Plant (PJSC HARP)
3, Industriálna Ave., Kharkov, 61089 Ukraine
has been assessed by notified body 1356
Výskumný ústav dopravný, a. s.
Veľký Diel 3323, 010 08 Žilina
Slovak Republic.

In respect of compliance with the applicable requirements of the above mentioned Directive and below mentioned Decisions/Regulations.

This EC Type Examination has been performed by application of Module SB of the Commission Decision No. 2015/718/EU and Commission Regulation (EU) No. 323/2013 as amended by Commission Regulation (EU) No. 1236/2013 and Commission Regulation (EU) 2015/524 (TSI WAG) adopted pursuant to the Directive.

The Object of assessment as identified above was shown to comply with the Assessment Requirements, subject to any restrictions and conditions as listed in the EC Assessment Report No. 1356/8.1/8B/2019/RST/EN444/01/01, where are provided in detail the assessment results. The EC Assessment Report is an integral part of this intermediate statement verification (ISV). The Essential Requirements have been assessed as being met through compliance with the requirements of the relevant TSI only.

This ISV is valid for the object of assessment as identified above as long as the Object of Assessment and the relevant technical documentation are not modified. The Notified Body must be informed about any modifications without delay.

This certificate supersedes the certificate No. 1356/8.1/8B/2019/RST/EN444 issued on 15/07/2019

In Žilina: 30/04/2020
Valid from: 30/04/2020
Valid until: unlimited

Signature: On behalf of Notified Body
Ing. Michal Kala
Position: Deputy Head of Department of Certification, Testing and Interoperability

1229146

Výskumný ústav dopravný, a. s.
Veľký Diel 3323, 010 08 ŽILINA

Autorizovaný orgán: DKT-CZ s.r.o. | Autorizovaný orgán: DKT-CZ s.r.o. | Autorizovaný orgán: DKT-CZ s.r.o.
Autorizovaný orgán: DKT-CZ s.r.o. | Autorizovaný orgán: DKT-CZ s.r.o. | Autorizovaný orgán: DKT-CZ s.r.o.

Intermediate Statement of Verification - EC Type Examination

No. 1356/8.1/8B/2020/RST/EN978

In accordance with Directive 2006/78/EC of the European Parliament and of the Council of 17 June 2006 on the interoperability of the rail system within the Community as amended

Part of subsystem

- Roller radial bearings with short cylindrical rollers 42724EM1 (WJ120x240)
- Roller radial bearings with short cylindrical rollers 232724EM1 (WJ120x240)

Private Joint Stock Company U.P.E.C.
4, Marshal Bat'kivsky Str., Kharkov, 61038 Ukraine
and produced in the manufacturing plant
Private Joint Stock Company Kharkov Bearing Plant (PJSC HARP)
3, Industriálna Ave., Kharkov, 61089 Ukraine
has been assessed by notified body 1356
Výskumný ústav dopravný, a. s.
Veľký Diel 3323, 010 08 Žilina
Slovak Republic.

In respect of compliance with the applicable requirements of the above mentioned Directive and below mentioned Decisions/Regulations.

This EC Type Examination has been performed by application of Module SB of the Commission Decision No. 2015/718/EU and Commission Regulation (EU) No. 323/2013 as amended by Commission Regulation (EU) No. 1236/2013 and Commission Regulation (EU) 2015/524 (thereafter only TSI WAG) adopted pursuant to the Directive.

The Object of assessment as identified above was shown to comply with the Assessment Requirements, subject to any restrictions and conditions as listed in the EC Assessment Report No. 1356/8.1/8B/2020/RST/EN978/01/01, where are provided in detail the assessment results. The EC Assessment Report is an integral part of this intermediate statement verification (ISV). The Essential Requirements have been assessed as being met through compliance with the requirements of the relevant TSI only.

This ISV is valid for the object of assessment as mentioned above as long as the Object of Assessment and the relevant technical documentation are not modified. The Notified Body must be informed about any modifications without delay.

In Žilina: 12/05/2020
Valid from: 12/05/2020
Valid until: unlimited

Signature: On behalf of Notified Body
Ing. Michal Kala
Position: Deputy Head of Department of Certification, Testing and Interoperability

122914

RAILWAY SEGMENT - APPLICATION



HARP is one of the largest CIS manufacturers of bearing products and the only Ukrainian manufacturer of bearings for railway transport of “1520 space”. Bearings are distinguished by an increased overhaul life (800 000 – 1 000 000 km), optimized profile, microgeometry and heat treatment. Among our customers are Ukrainian National Railways (Ukrzaliznitsya) and leading wagon-building companies of the CIS.

- Axleboxes of freight cars
- Axleboxes of locomotives
- Traction motors and generators of locomotives
- Underground and tram cars

Gauge width:

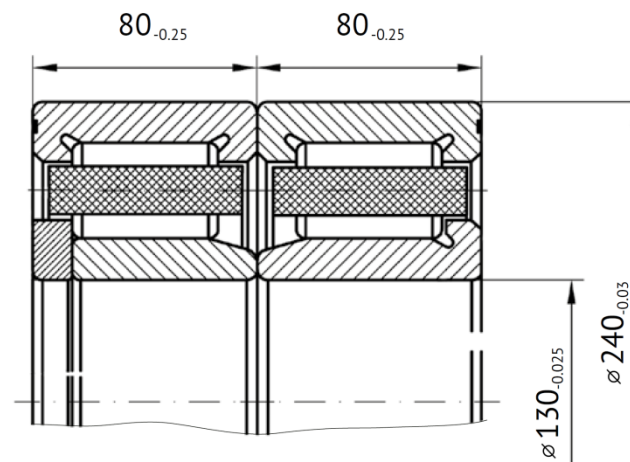
- 1520 mm
- 1435 mm



OFFER FOR RAILWAYS

Cylindrical roller bearings for axleboxes of freight and passenger cars operating on gauge of 1435 mm

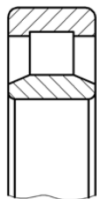
Designation	GOST	3042726EM and 3232726EM	42724EM1 and 232724EM1
	DIN	(WJ/WJP 130x240)	(WJ/WJP 120x240)
Dimensions (d x D x B/C), mm		130 x 240 x 80	120 x 240 x 80
Weight, kg		14.8	15.7
Load, kN	Dynamic, kN	540	540
	Static, kN	780	780
Radial clearance, mm		min 0.130 max 0.180	min 0.130 max 0.180
Application		Axle boxes of freight and passengers cars	Axle boxes of freight and passengers cars



WJ/WJP 130x240

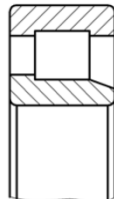
OFFER FOR RAILWAYS

Fig. 1



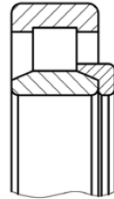
NU
(32000)

Fig. 2



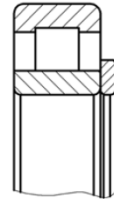
NJ
(42000)

Fig. 3



NU+H
(52000)

Fig. 4



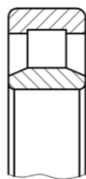
NU+HJ
(152000)

Cylindrical roller bearings for locomotives

Bearing designation		Overall dimensions, mm			Weight, kg	Load, kN		Maximum rotational speed, RPM	Application	Fig. No.
GOST	International designations	d	D	B/C(S)		dynamic	static			
30-32630ЛМ	NU2330-E-M1	150	320	108	43.2	1090	980	1700	Diesel locomotive and tender axle boxes	1
30-42630ЛМ	NJ2330-E-M1	150	320	108	44.6	1090	980	1700		2
30-52630ЛМ	NU2330M+HJ2330	150	320	123/108	46.2	1090	980	1700		3
30-32532EM	NJ2232-E-TVP2	160	290	80	22.4	809	957	1800	Diesel locomotive and electric locomotive axleboxes	1
30-152532EM	NJ2232P+PLC810-1	160	290	94/80	23.93	809	957	1800		4
30-32532Л1М	NJ2232-E-M1	160	290	80	24.5	809	957	1800		1
30-152532Л1М	NJ2232MAS+PLC810-1	160	290	94/80	26	809	957	1800		4
30-42532Л1М	NJ2232-E-M1	160	290	80	25	809	957	1800	Electric locomotive axleboxes	2
30-42536EM	NJ2236-E-TVP2	180	320	86	28.9	1010	1094	1600		3
30-52536EM	NJ2236TN+ NJ2236	180	320	98/86	30.3	1010	1094	1600		4
30-152536EM	NJ2236P+PLC810-1	180	320	100/86	30.63	1010	1094	1700		2
30-42536ЛМ	NJ2236-E-M1	180	320	86	31.8	1010	1094	1600		3
30-52536ЛМ	NJ2236M+HJ2236	180	320	98/86	33.1	1010	1094	1600		4
30-152536ЛМ	NJ2236MAS+PLC810-1	180	320	100/86	33	1010	1094	1600		4
30-152536ЛМ/30M1-152536ЛМ/30M2-152536ЛМ/30M3-152536ЛМ/30M4-152536ЛМ/	NJ2236MASC4+PLC810	180	320	100/86	33.4	1010	1094	1700		1
30-32732ЛМ	NJ160x320x108M	160	320	108	41.7	1090	1211	1800	Diesel locomotive axleboxes	3
30-52732ЛМ	NJ160x320x108M+HJ732	160	320	123/108	44.6	1090	1211	1800		2
30-42836ЛМ/30M1-42836ЛМ/30M2-42836ЛМ/30M3-42836ЛМ/30M4-42836ЛМ/	NJ2236MASC4	180	320	90/86	31.8	1010	1094	1700	Electric locomotive axleboxes	2

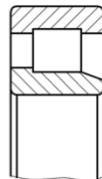
OFFER FOR RAILWAYS

Fig. 1



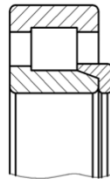
NU
(32000)

Fig. 2



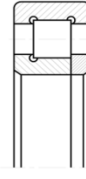
NJ
(42000)

Fig. 3



NJ+HJ
(62000)

Fig. 4



NUP
(92000)

Cylindrical roller bearings for traction motors

Bearing designation		Overall dimensions, mm			Weight, kg	Load, kN		Maximum rotational speed, RPM	Application	Fig. No.
GOST	International designations	d	D	B/C(S)		dynamic	static			
H0-62417K1M	NJ417M+HJ417	85	210	66/52	10.6	332	351	3600	EDT-200B traction motor for TE-2, TE-3, TEM-1 diesel locomotives	3
H0-92417K2M	NUP417-JP3	85	210	52	10.5	332	351	3600	ED-118 ED-107A, ED-118 traction motors for TE10, M62, TE-116, TEM-2 locomotives	4
80-32417M	NU417-M1.C4	85	210	52	10.4	332	351	3600	Electric traction motors	1
H0-32419M	NU419-M1	95	240	55	13.5	419	443	3200	Traction motors for types RT-113A, RT-51M, 1DT003 electric locomotives	
80-32322M	NU322-E-M1.C4	110	240	50	12.3	401	467	3000	Anchor bearing for triple traction converter	
H0-32424M	NU424-M1	120	310	72	29.2	695	805	1900	TE-006 traction motors for ChME3-type diesel locomotives	2
H0-42428M	NJ428-M1	140	360	82	48.8	905	1046	1700	NB-406B, TL-3, TL-2K1, NB-412K traction motors for electric locomotives VL-8, VL-10, VL-15, VL-60, all indices	
H0-32330EM	NU330-E-M1	150	320	65	24.3	675	777	2300	ED-118A-type traction motors for all indices of locomotives of 2TE10, 2TE16 and 2M62 series	1
H0-32330MY1	NU330-E-M1	150	320	65	26.8	675	777	2300	NB-418K6 type traction motors for VL-80 series electric locomotives, all indices	2
H0-42330EM	NU330T-E-M1	150	320	65	24.67	675	777	2300		
H0-42330L1M	NU330-E-M1	150	320	65	26.96	675	777	2300	Traction motors for ChS4, ChS4T electric locomotives	1
80-32134M1	NJ1034-M1.C4	170	260	42	8.24	302	434	2200		
80-32140L4	NJ1040-M1.C4	200	310	51	15	430	626	1900	Traction gear boxes for ER series electric locomotives, ER series traction electric motors, traction gear box for E, 81-717, 81-714 type underground trains	4
80-92140L3M	NUP1040-M1.C4	200	310	51/39.5	15.8	430	626	1900	Traction gear box for ER series electric locomotives	1
80-32152LM	NJ1052-E-M1	260	400	65	29.16	627	1070	1800	Traction gear box for ER2R, ER2T, ED2T, ED9 all indices, E12 series electric locomotives	
80-92152LM	NUP1052-M1.C4	260	400	65/52.5	30.6	627	1070	1800		
30-42822E2M	WJ110x215x75-M1	110	215	76	11.89	433	431	2600	Underground railway cars	
30-232822E1M	WJP110x215-P-M1	110	215	76	11.85	433	431	2600		

SALES GEOGRAPHY



Ukraine, Russia, Kazakhstan, Belarus, Georgia, Azerbaijan, Uzbekistan, Poland, Romania, Serbia, Lithuania, Latvia, Estonia, Turkey



CONTACT DETAILS



Official distributor:

PJSC U.P.E.C.

Railway Department

Director – Mr. Viktor Gukov (Russian)

E-mail: gukov@upec.ua

Export manager – Ms. Kateryna Tovstopyat (English)

E-mail: tovstopyat@upec.ua

WhatsApp: +380508861243



WWW.HARP.UA

LOOKING FORWARD TO COOPERATION!